

# SHEEP HERDING GAME

## Materials you will need:

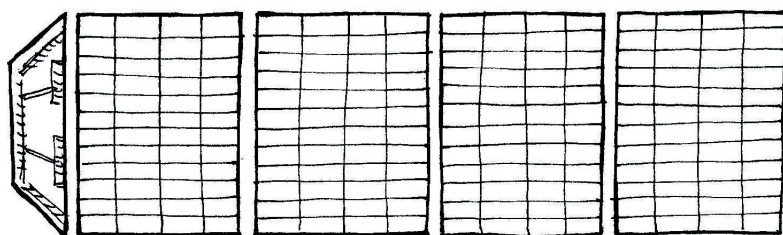
4 copies of game board page (sheet covered with rectangles)

1 copy of the dog and sheep page

## Assembly:

Tape the 4 game board pieces together side by side (long sides taped together). Cut out the corral piece and tape it to one of the short sides of the game board. (The doors in the corral should match up with three of the squares on the board.)

Cut out the dogs and the sheep and fold and glue as indicated to make them stand up.



## How to play:

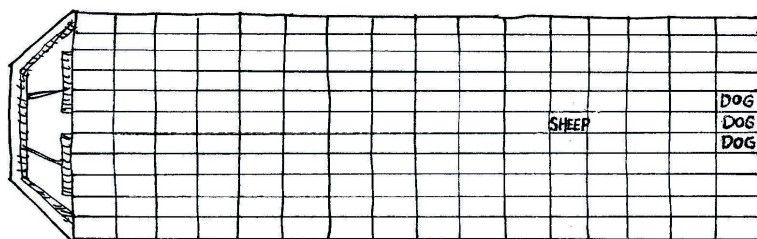
This game is for 2 or 3 players. If you have more players, double up and form teams. Before you begin playing, assign a corral to each player. (All corrals have an equal chance of winning, so it really doesn't matter who gets which.) You may mark the corrals with numbers or letters to identify them if this is helpful to the players.

The object of the game is to use your herding dog to get the sheep into your own corral. To move your dog you must answer questions.

The questions are divided into four sheets: A, B, C, and D. If you have three players, one gets sheet A, one gets sheet B, and one gets sheets C and D. If you are playing with two players, one player gets sheets A and C, and the other gets sheets B and D.

If you have many players, you may divide them into several teams.

Place the dog and sheep tokens on the game board, like this:



To move your dog or the sheep, you must answer questions. If it is player one's turn, player two (or three) asks player one a question from their own question sheet (not from player one's sheet, from player two or three's own sheet). They read both the question and the three possible answers. If player one can guess the right answer on the first guess, he earns 6 spaces; if he guesses the right answer on the second guess (yes, he gets another guess if the first one is wrong!), he earns 4 spaces, and if he gets the right answer

on the third guess (he'll certainly be right this time!!) he earns 2 spaces.

As you move your dog, you try to get it exactly behind the sheep. If you succeed in landing your dog in the square right behind the square the sheep is standing on, you get to move the sheep! The number of spaces you may move the sheep is the number you have leftover from the number you earned by answering your questions.

Let's say you got your question right on the first try and earned a 6. You move your dog 3 spaces (remember, you can go in any direction) and the third hop lands you right behind the sheep. You've only used 3 of your 6 hops. Now you can use the remaining 3 to move the sheep. Move the sheep 3 spaces in any direction (preferably in the direction of your corral).

The first player to get the sheep into his corral wins the game.

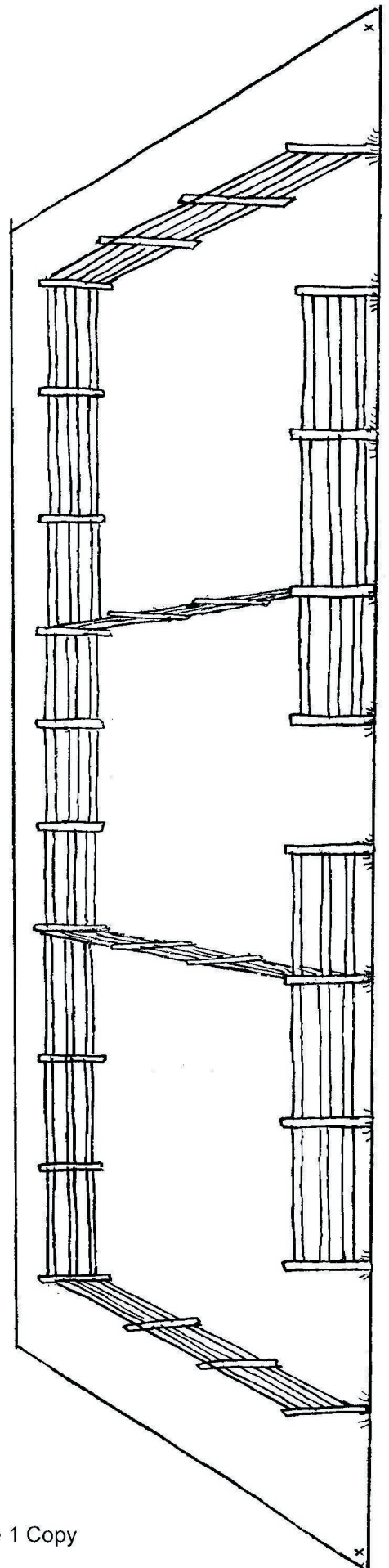
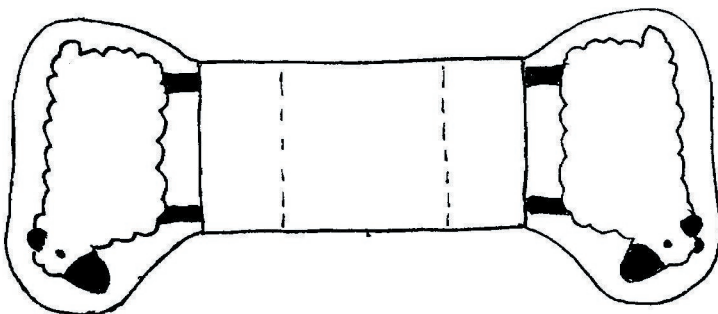
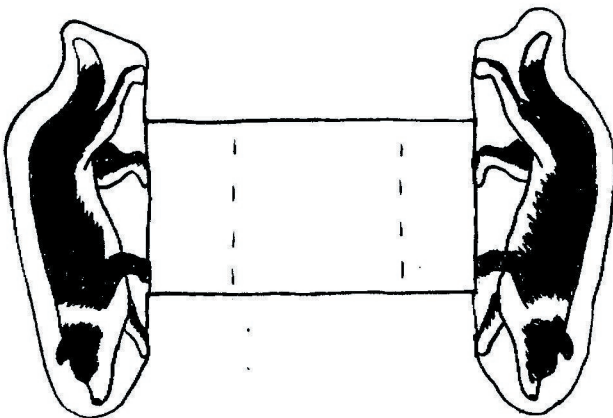
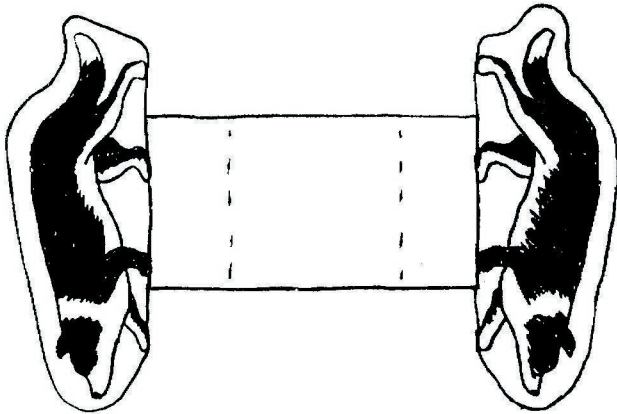
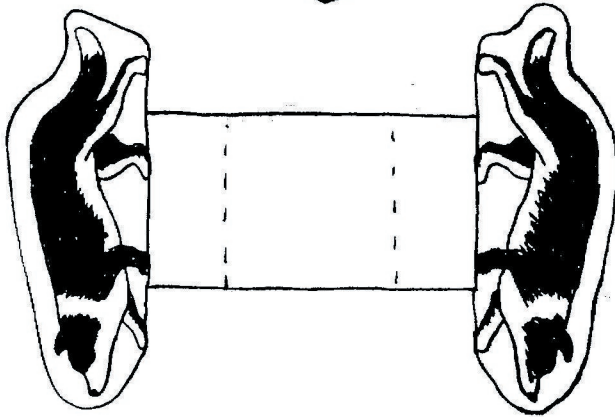
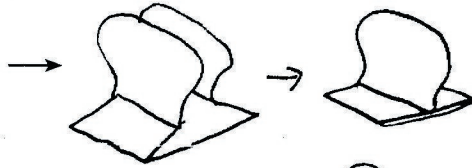
#### REALLY FUN GROUP PLAY OPTION:

If you have multiple students and a large tiled floor space, you can mark out the board on the floor using tiles. Mark out the edges with yarn or rope. You can use stuffed animal dogs and sheep, (You could substitute other breeds for border collies, since stuffed animal border collies are a little hard to come by. Just make sure the kids know that in real life, special herding dogs are used to herd. Most kinds of dogs would make terrible herders.) Another option would be to make larger versions of the paper dogs using the pattern.

Assign the players to teams. Let members of the teams take turns moving the dogs and sheep. Doing this game large scale makes the game seem more like real herding, and increases the fun for the players!



assembly  
of animals



Make 1 Copy


## Question Sheet A

The sheep belongs to which animal family?

- a) non-ruminant herbivores    b) ruminants    c) carnivores

The correct term for a sheep's wool is:

- a) fur    b) hair    c) fleece

↓

A sheep's body temperature is:

- a) 98.6    b) 100    c) anywhere between 100 and 103

A ewe comes into heat every how many days?

- a) 18    b) 48    c) 88

The main breeding season for sheep is:

- a) spring    b) summer    c) fall

The gestation period (the time a ewe is pregnant) is:

- a) 45 days    b) 145 days    c) 1045 days

An adult sheep weighs about:

- a) 20 pounds    b) 200 pounds    c) 2000 pounds

Newborn lambs usually have their tails "docked." This means they are:

- a) cut off    b) curled    c) cleaned

Sheep are often given a vaccine that humans also get. Which one?

- a) tetanus    b) measles    c) anthrax

What should be the first part of a lamb to come out when it is being born?

- a) the head    b) the front legs    c) the back legs

Sheep need preventative medicine to keep them from getting:

- a) worms    b) flies    c) fleas

For the first 16 hours of its life, a lamb gets special milk from its mother, which is called colostrums.

This milk has antibodies in it, which will help the lamb:

- a) learn to walk quickly    b) fight off infections    c) learn to like milk

After a lamb is born, the placenta comes out. It is sometimes called the "afterbirth." In the wild, what will a ewe do to the afterbirth?

- a) eat it    b) step on it    c) run away from it

What do sheep say?    a) naaaa    b) baaaa    c) maaaa

You can tell how old a sheep is by looking at its:

- a) hooves    b) teeth    c) wool

## **Question Sheet B**

What do goats say?

- a) naaaa   b) baaaaa   c) maaaaa

Which is considered the smartest of these animals?

- a) sheep   b) goat   c) cow

Which one of these describes sheep?

- a) grazers   b) browsers   c) foragers

Which one of these parts of the sheep does not need trimming?

- a) fleece   b) hooves   c) teeth

Some sheep are called "polled." What does this mean?

- a) they have super-straight legs   b) their fleece is white   c) they don't have horns

Sheep need to have shelter to protect them from too much:

- a) rain   b) sun   c) snow

A sheep defends itself against natural enemies primarily by:

- a) biting   b) kicking   c) running away

The most common use for sheep's milk is to make:

- a) cheese   b) ice cream   c) yogurt

Adult male sheep are called:

- a) bulls   b) rams   c) boars

Which one of these does a sheep NOT eat?

- a) hay   b) grain   c) straw

How often do sheep farmers shear their sheep?

- a) once a day   b) once a month   c) once a year

A sheep is a ruminant. This means it has a rumen. The rumen is part of the:

- a) brain   b) digestive system   c) udder

A sheep needs this in its rumen to be able to digest the plants it eats:

- a) microorganisms   b) acid   c) lanolin

Sheep produce a substance called lanolin. Humans sometimes use lanolin as a:

- a) laxative   b) shampoo   c) skin softener

Which country has more sheep than people?

- a) Canada   b) England   c) New Zealand

## **Question Sheet C**

Which one of these is not a property of wool?

- a) flame resistant   b) very warm   c) dissolves in water

After the wool is sheared off the sheep, it is cleaned and then carded. What is carding?

- a) combing it with special brushes   b) cutting it   c) putting it into bags

About how many sheep are there in the United States?

- a) 10,000   b) 1,000,000   c) 10,000,000

About how many different breeds of sheep are there?

- a) 9   b) 90   c) 900

Which kind of dog is never used to herd sheep?

- a) Border collie   b) Beagle   c) German shepherd

Which US state has the most sheep?

- a) Texas   b) Pennsylvania   c) Kansas

In New Zealand, there is a certain kind of animal that kills sheep in order to eat their kidneys. What is it?

- a) wolf   b) bird   c) crocodile

Most lambs are born at what time of year?

- a) spring   b) summer   c) fall

How long does it take for a lamb to grow to be an adult sheep?

- a) one year   b) three years   c) ten years

Sheep are ruminants. This means their stomach has how many parts?

- a) one   b) four   c) eight

## **Question Sheet D**

A castrated (neutered) male horse is called a gelding. A castrated male sheep is a:

- a) ram    b) boar    c) wether

How many sheep does it take to be called a flock?

- a) 3    b) 30    c) 300

The average lifetime of a sheep is:

- a) 2 years    b) 8 years    b) 18 years

Which one of these animals produces the milk with the highest amount of fat and protein?

- a) cow    b) goat    c) sheep

Which one of these commands is not used with sheep herding dogs:

- a) "come by"    b) "away to me"    c) "get out of here"

Wool is used inside what kind of ball?

- a) baseball    b) basketball    c) golf ball

If you look at the outside of a single strand of wool under the microscope, it will look:

- a) scaly    b) spiky    b) dirty

Wool reacts chemically with water to produce:

- a) a terrible smell    b) grease    c) heat

What causes a strand of wool to be curly?

- a) toxic chemicals    b) uneven growth of layers inside the strand    c) sunshine

Wool is made of:

- a) protein    b) fat    c) sugar