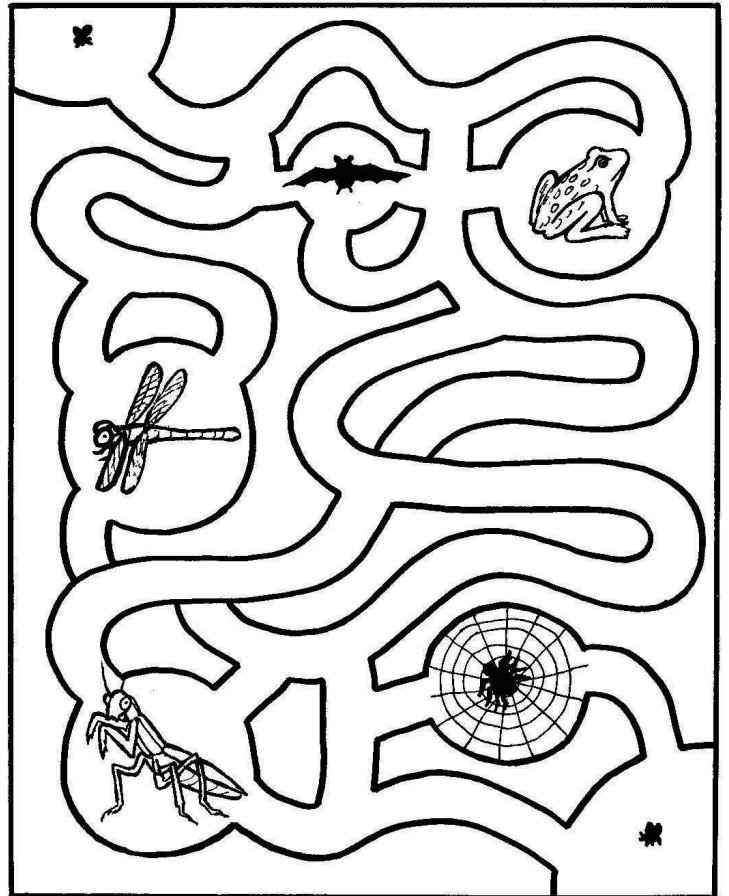
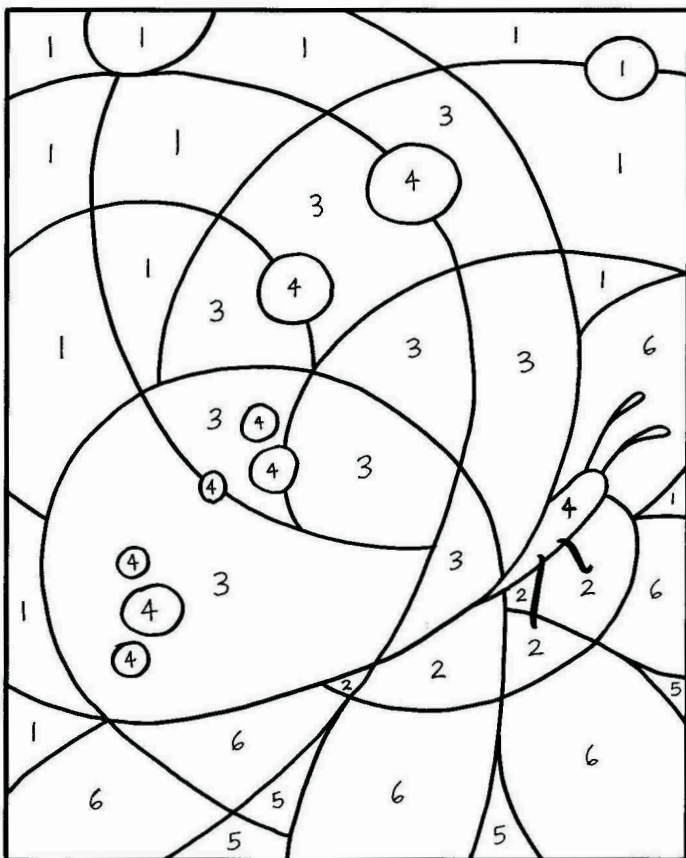


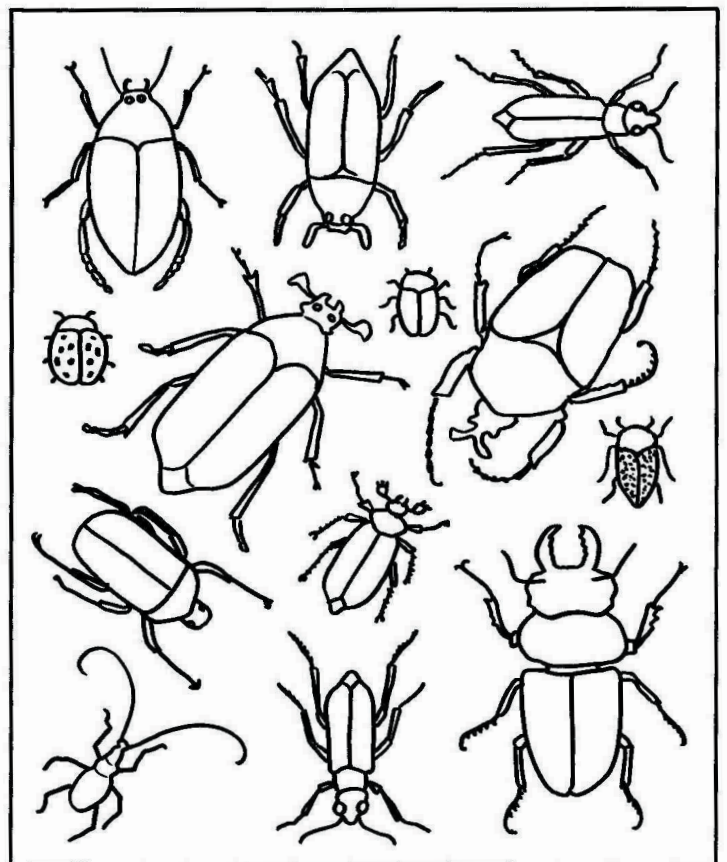
The diving beetle carries an air bubble under the water so he can breathe, just like a scuba diver carries a tank of air.



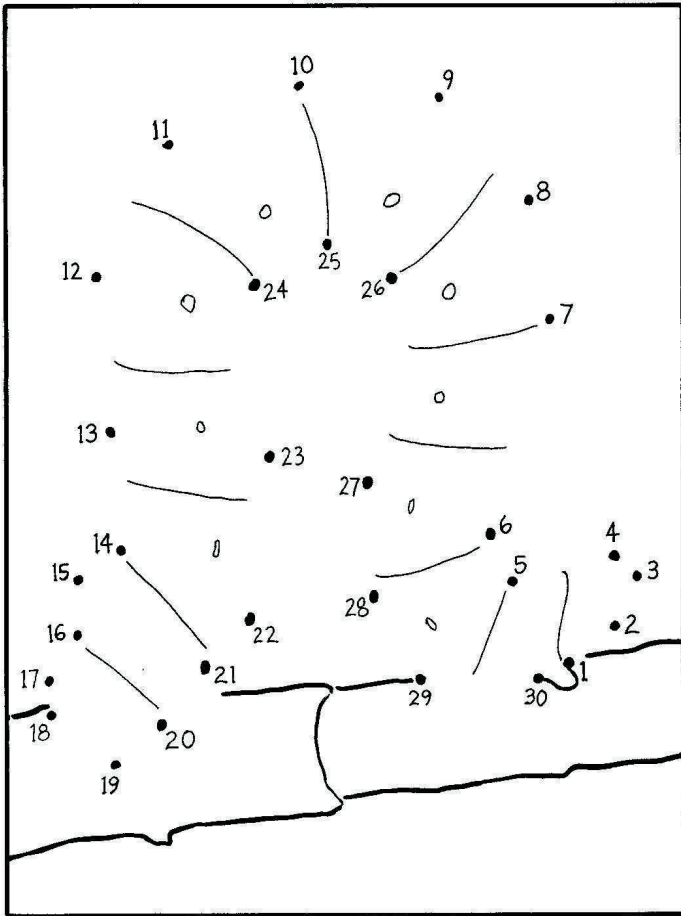
Help the gnats find each other without getting trapped or eaten.



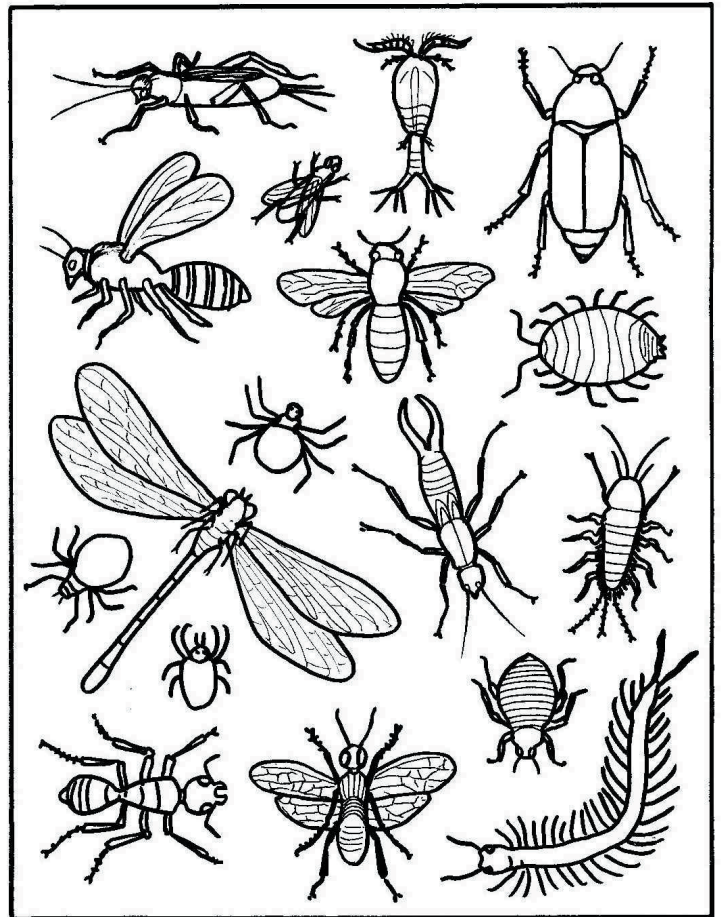
1 - blue 2 - yellow 3 - orange 4 - black 5 - green 6 - white



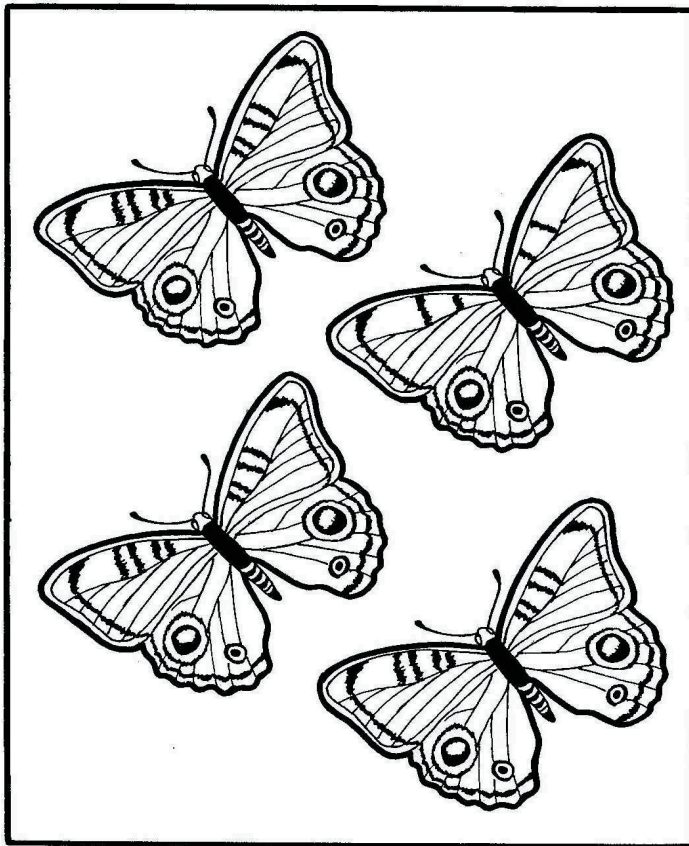
Which two beetles are exactly alike?



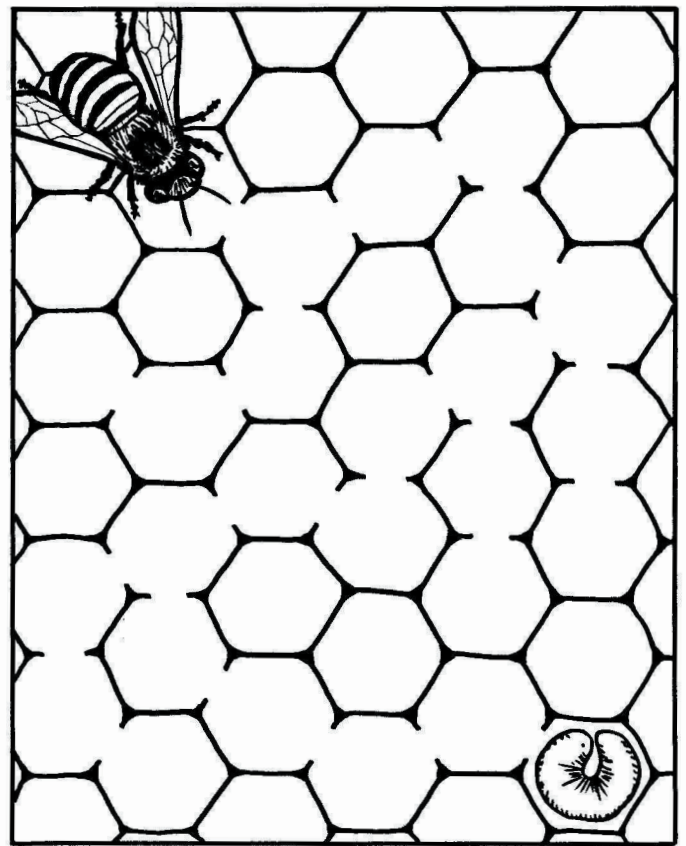
This insect is "inching" along the branch. What is it?



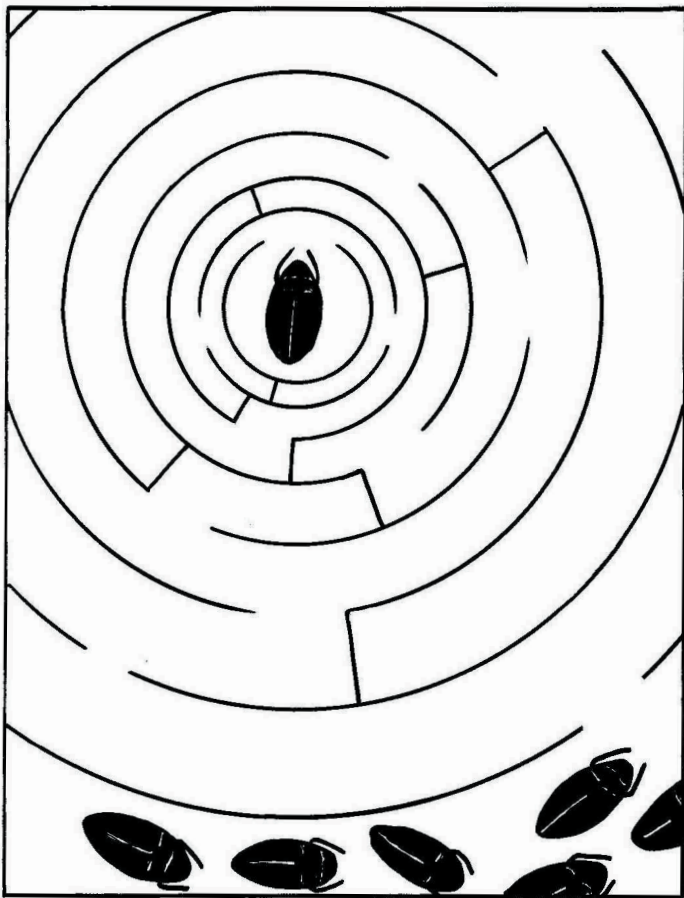
Insects have 6 legs. Circle the insects.



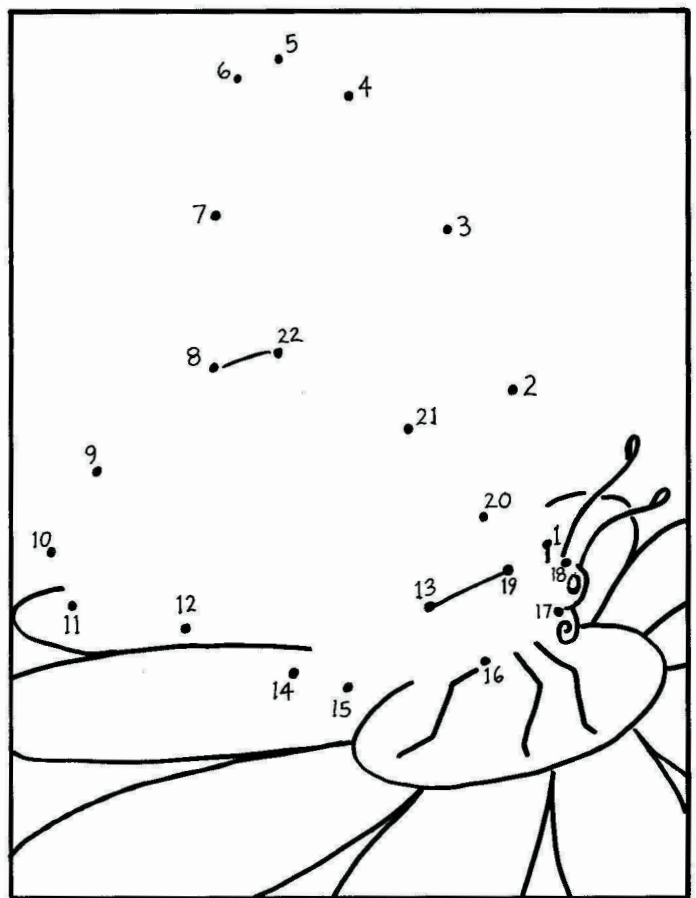
Which butterfly is different?



Help the worker bee find her way to the larva to feed it.



Help this whirlygig beetle join its friends.



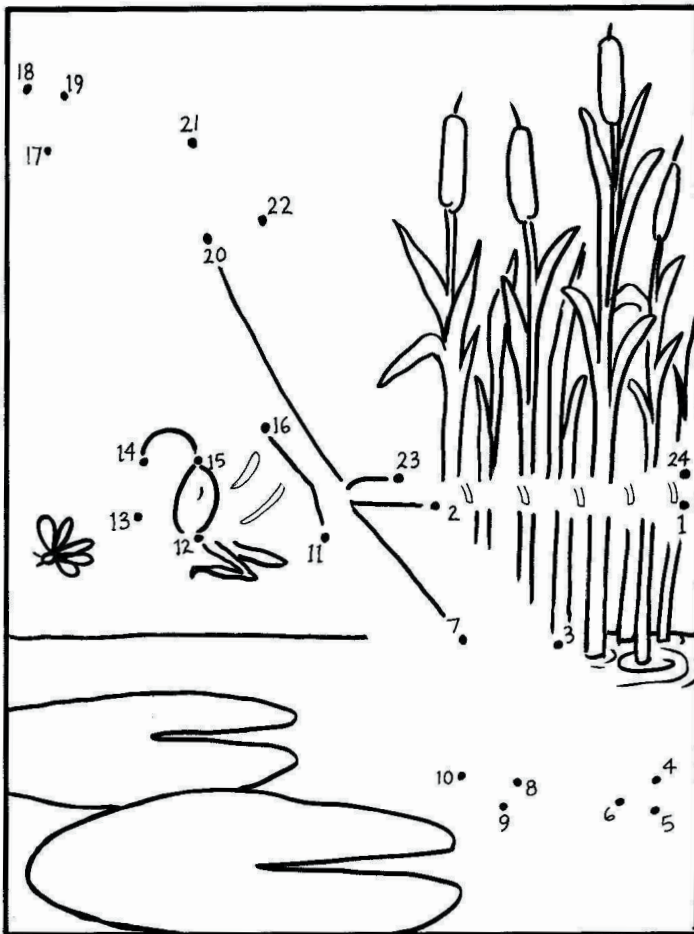
What kind of insect is sitting on this flower?



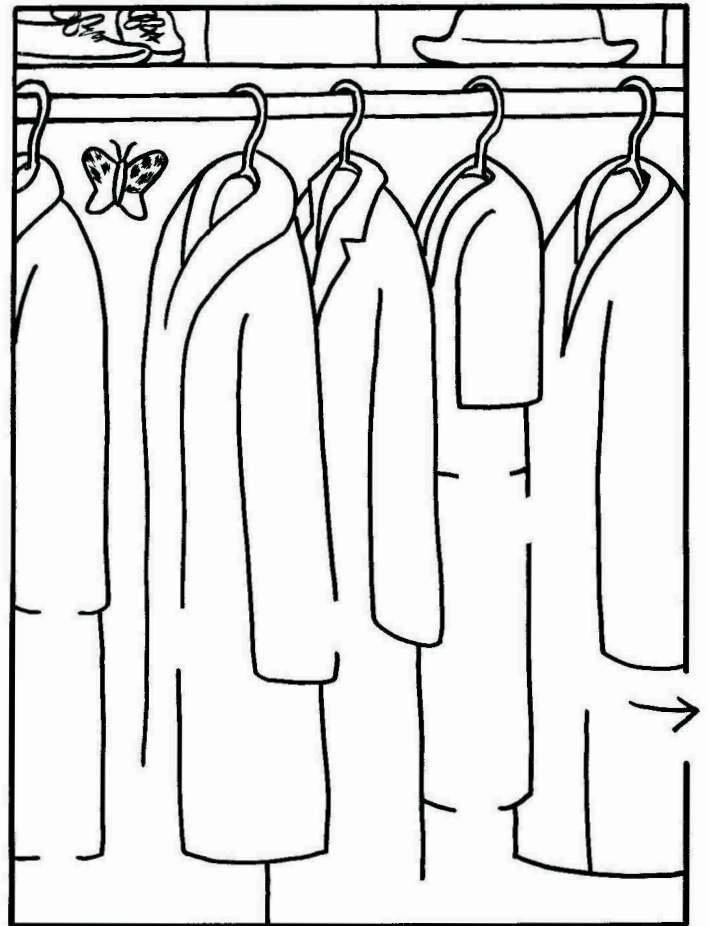
Can you find the stick insect? Color him green or brown.

DRAW YOUR OWN INSECT:

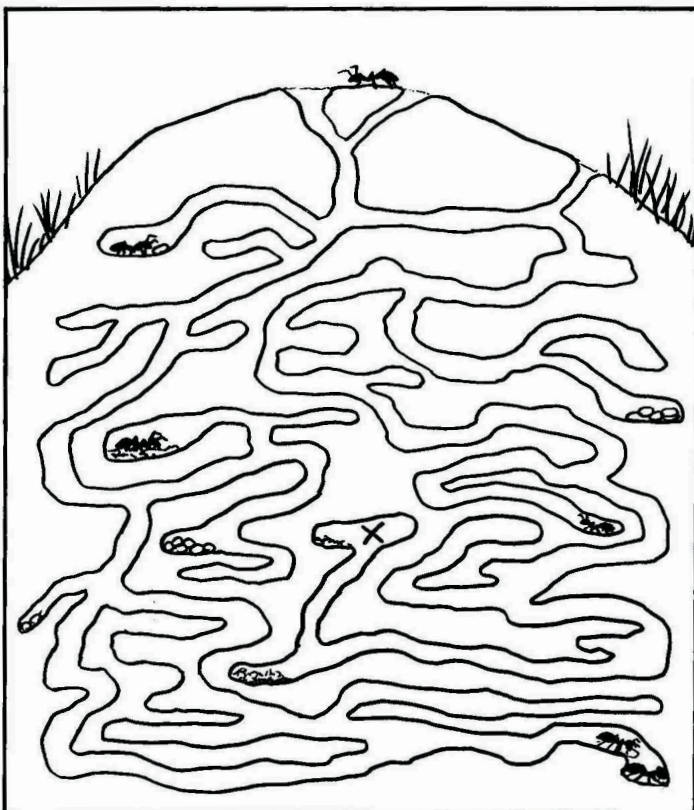
1. Draw three body parts.
2. Draw six legs.
3. Draw two big eyes.
4. Draw two antennae.
5. You may add wings, pinchers, stingers or anything else.



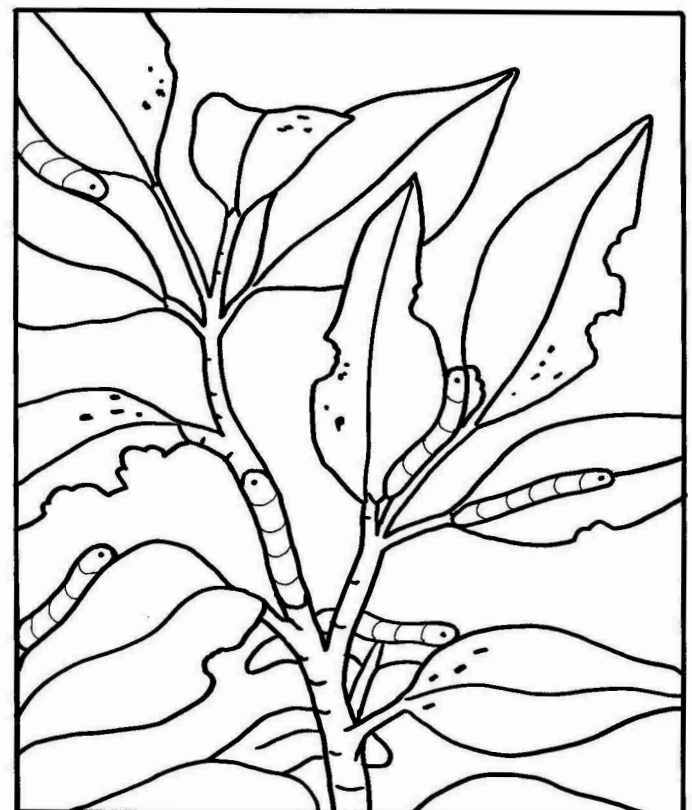
This large insect flies over ponds and hunts for other insects, capturing them in mid-air.



Help the moth get through the coats and out of the closet.



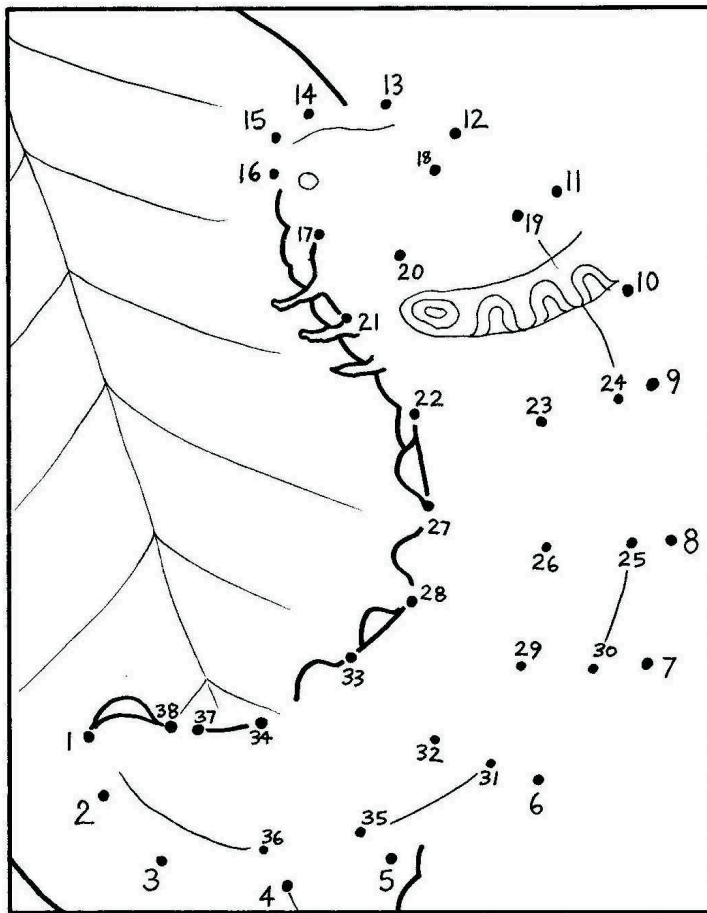
Ant hills have many storage chambers. Help this ant get to the chamber marked with an X.



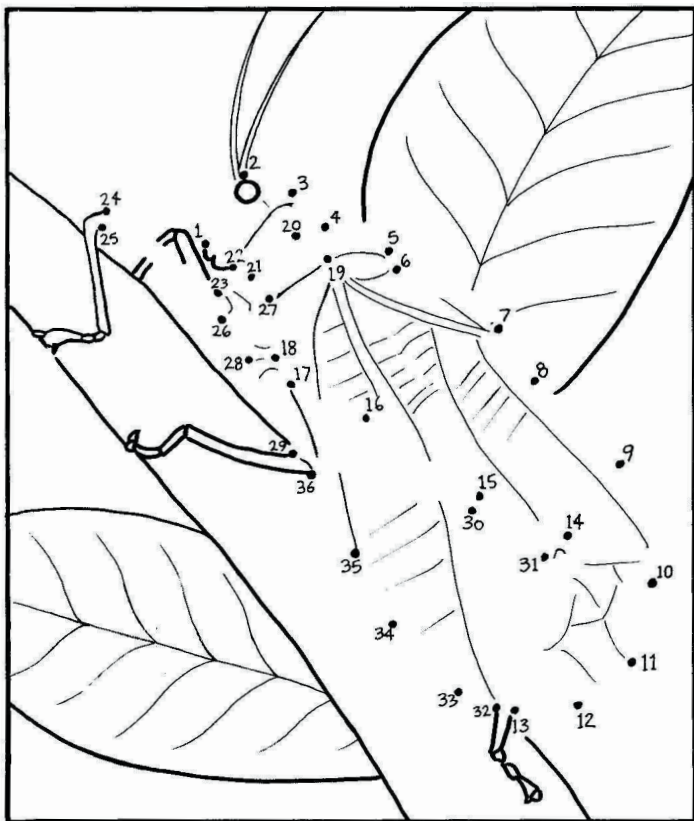
Can you find 6 caterpillars?



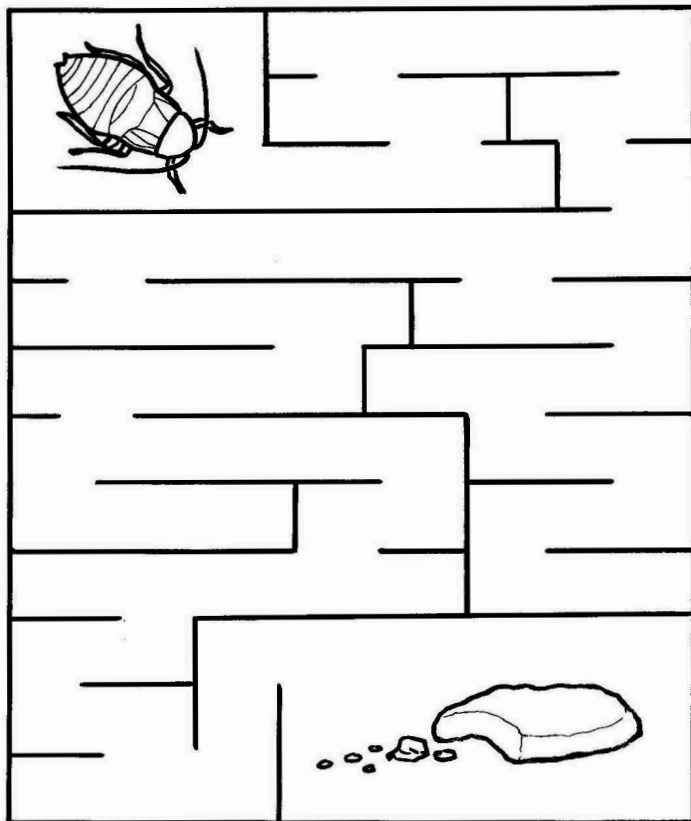
Can you find the Luna moth hidden among the leaves?



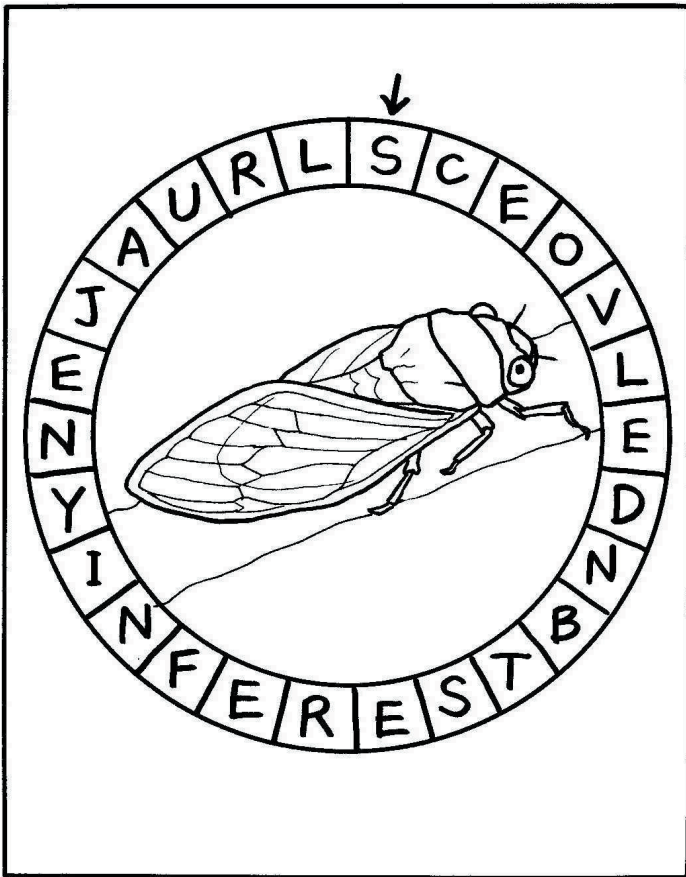
What is nibbling this leaf?



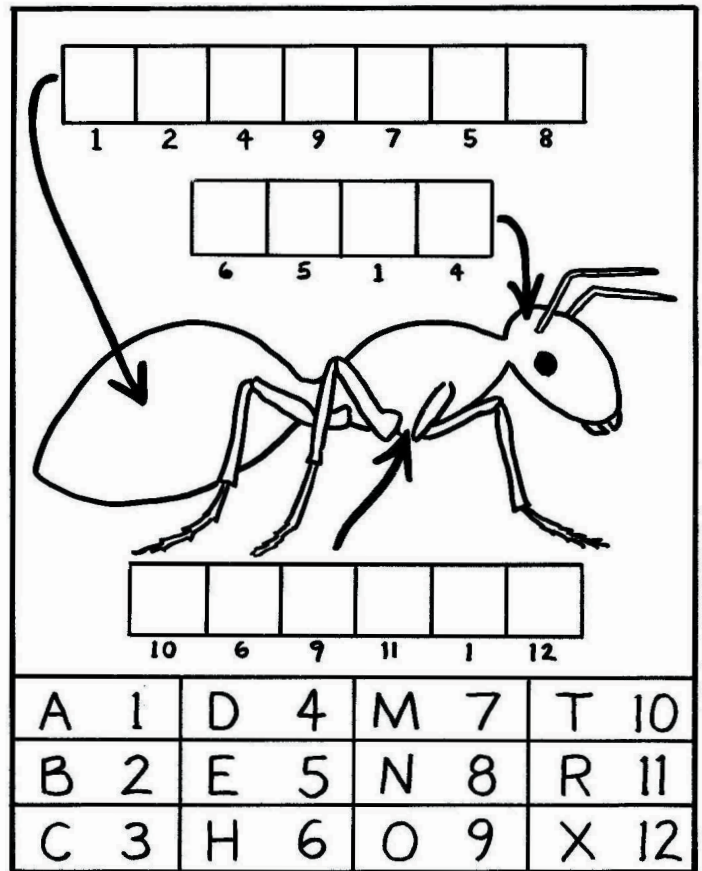
Connect the dots to see a katydid.



Help the cockroach get to the cookie crumbs.



How long will it take for this cicada to hatch out? Start with the letter S, then cross out every other letter to spell out the answer.



Use the code to spell out the names of these parts of an insect.

