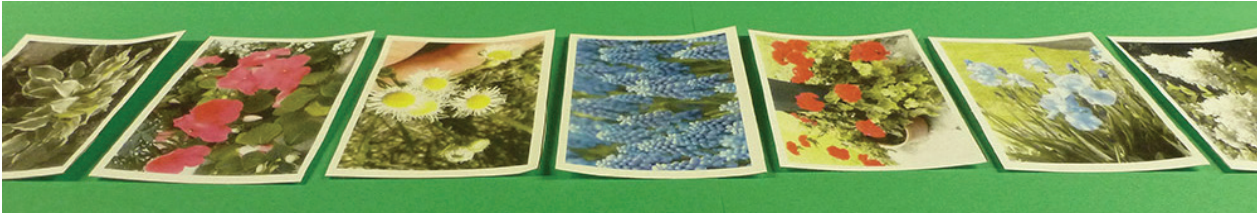


"Follow the Garden Path"



Purpose of game: Learn to identify some common garden flowers

Target age group: Any age

Materials needed: Copies of these flower cards printed onto card stock, a pen or pencil, scissors, (laminating plastic if you want to make the cards durable)

Number of players: 2 to 6

Time needed to play: 15- 45 minutes (depending on how many players and how many cards you use)

How to prepare:

Copy or print the flower cards onto heavy card stock paper. Before cutting the cards apart, write the names of the flowers on the back of each card. If you use a marker, test it first to make sure it won't bleed through the paper onto the picture on the front. After you have the names printed, cut apart the cards. (If you know some of these flowers by other names, use the names you know.)

If you want to make the cards very durable, laminate them in plastic. You can buy laminating plastic at office supply stores (or even WalMart), or you can have the lamination done for you at the printing department of most office supply stores.

Blank cards have been provided so that you can add your own flowers. If you live in an area of the world where the flowers shown on the cards are not so common, add pictures of flowers from your area. You can use your own photos, or pictures from a garden catalog or from the Internet.

How to play:

Distribute the cards equally among all players. (You don't have to use all the cards. If you have a small group or limited time, select the cards you want to emphasize.)

The first player chooses one of his cards and lays it down (picture side up), saying its name very clearly so that all the other players can hear it.

The second player must remember and repeat the name of that first flower, then he can lay down a card from his hand, saying its name.

The third player must remember and repeat the names of the first two flowers before he is allowed to add a third card to the growing "garden path." Play continues like this, with each player reciting the names of all the previous flowers before adding one of their cards to the path.

If a player forgets the name of a flower, he has to stop at that point and can't add another card to the path on that turn. (Emphasize to the players how important it is to listen carefully as other players take their turns. In this game, you can't "tune out" between your turns!)

The winner is the first person to get rid of all their cards. You may have several players that all get rid of their last card on the same round, in which case you can call it a multiple-way tie.

You can de-emphasize competition and adjust the rules to suit your situation. You might want to add a rule that says that players get two (or more) "peeks" — two chances to turn over a card and read the name on the back. Or you can scrap competition completely and let the players give each other hints. Adapt the game to suit the personalities and abilities of your players.



ALYSSUM



ASTER



BEE BALM



ANTHURIUM



BLACK-EYED SUSANS



ASTILBE



BLEEDING HEARTS



BEGONIA



Write the name of the flower on the back of the card, then trim off the printed name. The name of the flower should not be visible when looking at the flower picture.

BRASS BUTTONS



CALA LILY



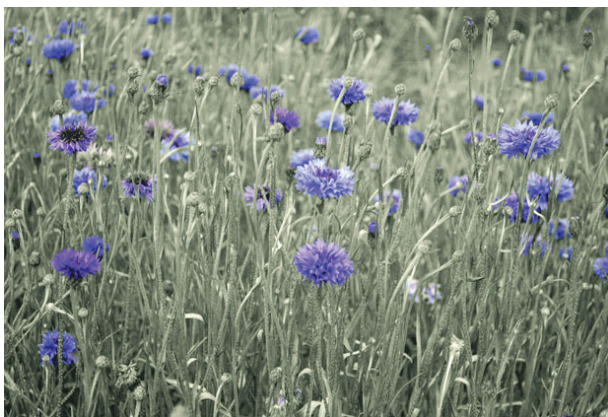
COLEUS



CONEFLOWER



CORNFLOWER



CROCUS



FEATHER CELOSIA
(or COXCOMB)



CHRYSANTHEMUM



Write the name of the flower on the back of the card, then trim off the printed name. The name of the flower should not be visible when looking at the flower picture.

LOTUS



DAISY



GERBER DAISY



DIANTHUS
(SWEET WILLIAM)



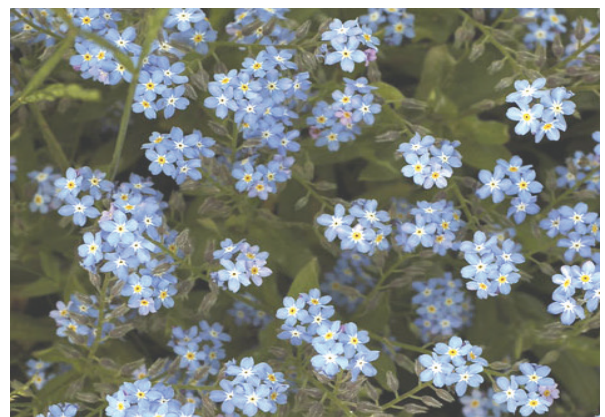
DAFFODIL



BUTTERCUP



FORGET-ME-NOT



FOXGLOVE



Write the name of the flower on the back of the card, then trim off the printed name. The name of the flower should not be visible when looking at the flower picture.

GERANIUM



FLEABANE



NASTURTIUM



IRIS



GRAPE HYACINTH



HYDRANGEA



HIBISCUS



IMPATIENS



Write the name of the flower on the back of the card, then trim off the printed name. The name of the flower should not be visible when looking at the flower picture.

JEWEL WEED



LOBELIA



MARIGOLD



PEONY



LAVENDER



GLADIOLUS



ORIENTAL POPPY



PETUNIA



Write the name of the flower on the back of the card, then trim off the printed name. The name of the flower should not be visible when looking at the flower picture.



PANSY



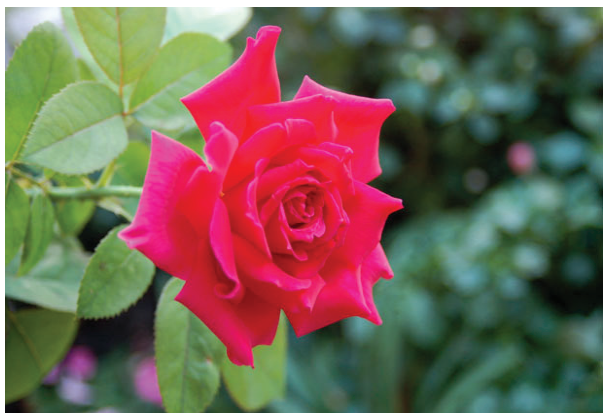
PHLOX



QUEEN ANNE'S LACE



PRIMROSE



ROSE



RED HOT POKER



BEACH PRIMROSE



SNAPDRAGON

Write the name of the flower on the back of the card, then trim off the printed name. The name of the flower should not be visible when looking at the flower picture.

SUNFLOWER



THISTLE



TIGER LILY



VINCA



LANTANA



TULIP



VIOLET



ZINNIA



Write the name of the flower on the back of the card, then trim off the printed name. The name of the flower should not be visible when looking at the flower picture.

