

Chicken Egg Development Wheel

A cut-and-assemble project for grades K-4

You will need:

- Copy of pattern pages printed onto white card stock
- Paper fastener
- Scissors (X-acto knife might also be helpful)
- Colored pencils

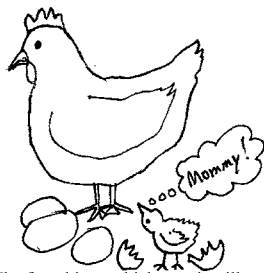
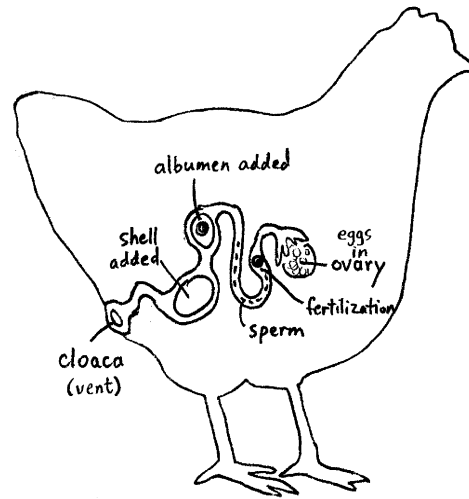
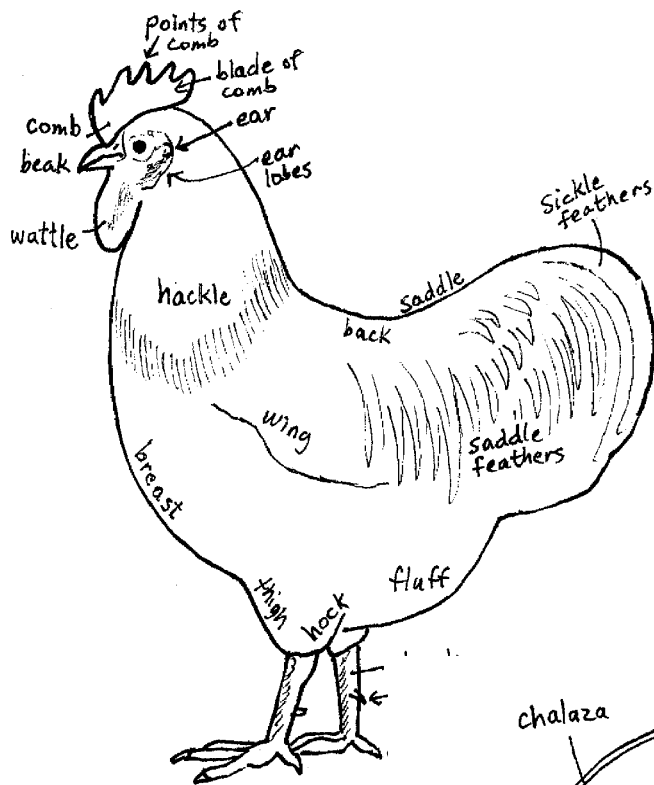
How to assemble:

- 1) Cut out the wheel and the square.
- 2) Cut out the two “windows” in the square piece, and cut the slot.
- 3) Color the developing eggs, if you wish to have them colored.
- 4) Put the wheel behind the square piece and insert through slot as shown in assembly diagram.
- 5) Push paper fastener through center hole and secure. Wheel will turn to show developing eggs through the “window.”

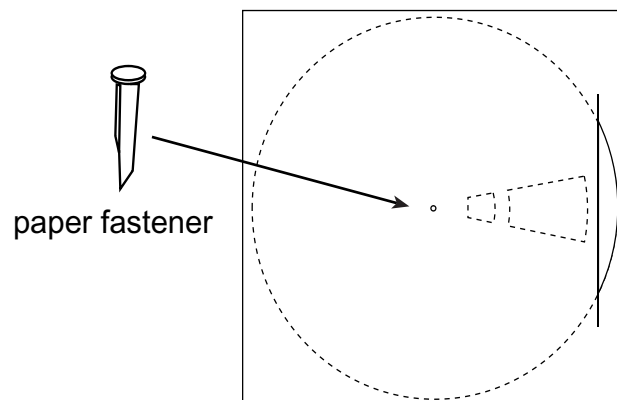
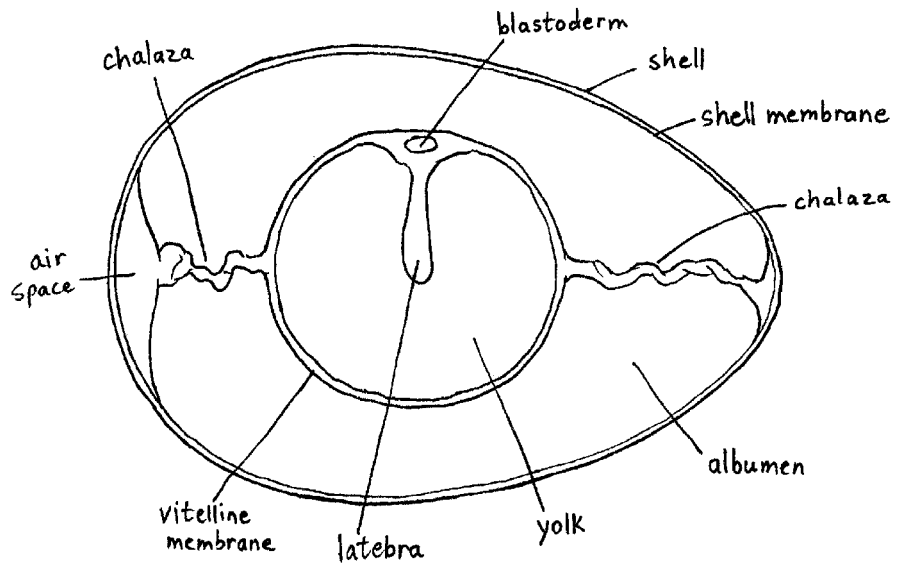


Egg Development Wheel

A chicken embryo takes 21 days to develop.



The first thing a chick sees it will consider its mother, whether it's a chicken or not!



XXXXXXXXXXXXXXXXXXXXXXXXXXXXXXXXXXXX

