

Eggs are laid in "rafts."  
The eggs hatch in a few days.

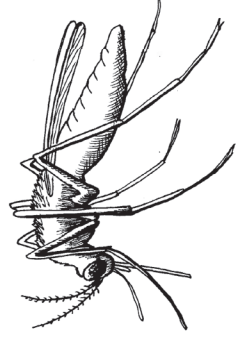
Mosquito larvae are often called  
"wigglers" or "wrigglers."

Mosquito pupae are often called "tumblers."  
Pupae do not eat. In a few days they turn into an adult.

The larvae have to shed their  
skins about 4 times while they  
are growing. These four stages  
are called "instars."  
This takes 3-7 days.

The larvae eat algae, bacteria,  
and other microorganisms.

## THE LIFE CYCLE OF A MOSQUITO



We are all familiar with adult mosquitoes. We see the females land on our skin and bite us. (They use our blood to lay their eggs.) We know their bites make us itch. We may not be as familiar with the other stages in the mosquito's life cycle.